



TECHNICAL DATA SHEET



V. 01

REV. 01

21-06-2022

ROTAIR

powerful >> compact

MDVS

PORTABLE COMPRESSORS

255 C

	AXLE WITHOUT BRAKES	3200 KG 7065 LB
	AXLE WITH BRAKES	3250 KG 7165 LB
	SKID VERSION	3050 KG 6724 LB



COMPRESSOR

Operating pressure	8 bar 116 psi	10 bar 145 psi	12 bar 174 psi
Free air delivery	25,3 m³/min 893 cfm	22,7 m³/min 802 cfm	20,5 m³/min 723 cfm
Minimum working pressure	5,5 bar - 80 psi		
Drive system engine-arend	Direct Drive		
Compressor cooling system	Air / Oil		
Oil cooling capacity	62,5 lt - 13.75 UK gal		
Air outlet temperature	40°C - 105°F + Ambient temperature		
Outlet valves	3 x 3/4" + 1 x 2"		
Noise level EECno 2000/14	< 100 LWA		
Battery capacity	12V cc - 750A-100Ah (EN)		
Fuel tank capacity	380 lt - 83.59 UK gal		
Consumes	32,9 lt/h - 7.24 UK gal/h		

DIESEL ENGINE

Engine make	CUMMINS
Engine type	QSB6.7
Engine system	4 strokes - Inline
Emissions	Stage III A / Tier 3
Displacement	6700 cc
N. cylinders	4
Aspiration	Turbo Intercooler
Max engine power @2200 RPM	194 kW - 262 HP
Max engine speed	2200 RPM
Min engine speed	1400 RPM
Cooling system	Water
Cooling system capacity	33 lt - 7.26 UK gal
Lubrication system	Oil
Lubrication system capacity	14 lt - 3.08 UK gal

ENVIRONMENTAL CONDITIONS

Max ambient temperature	50°C - 122°F
Max altitude	1800 m a.s.l.
Min working temperature	-10°C / 14°F

AXLE WITHOUT BRAKES

WITH ARTICULATED DRAWBAR
Slow towing from construction site



3200 KG
7065 LB

AXLE WITH BRAKES

WITH ARTICULATED DRAWBAR
Suitable for road traffic



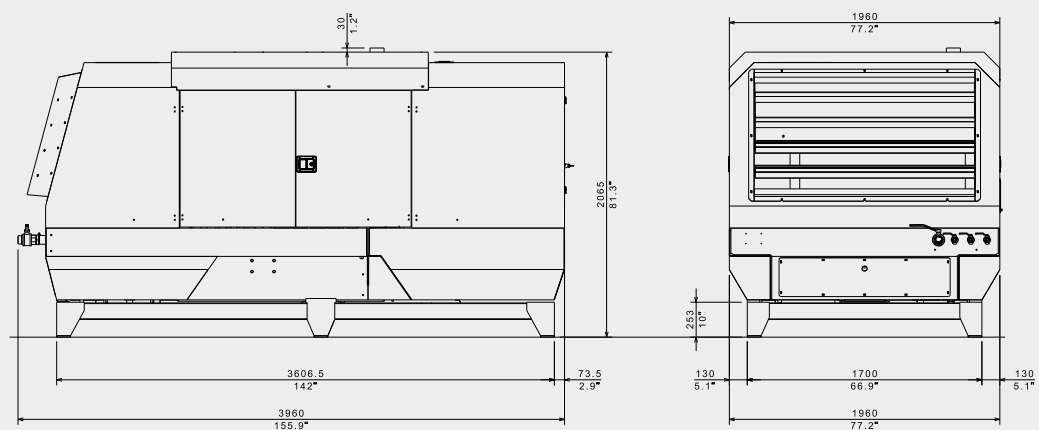
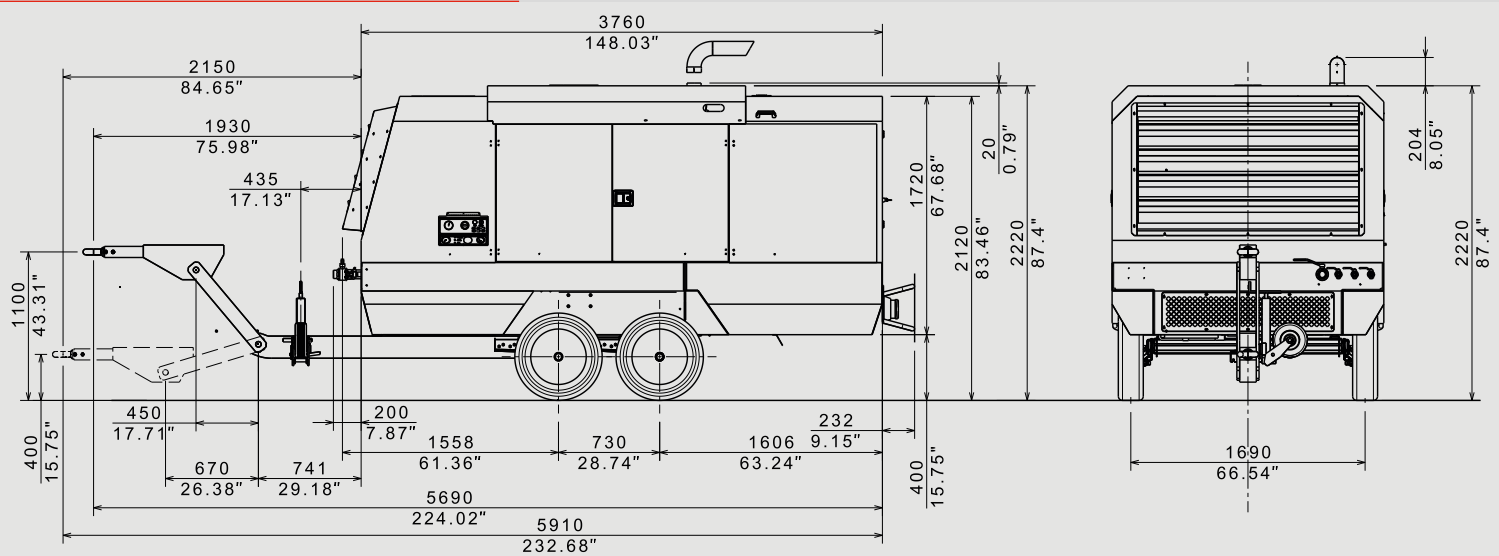
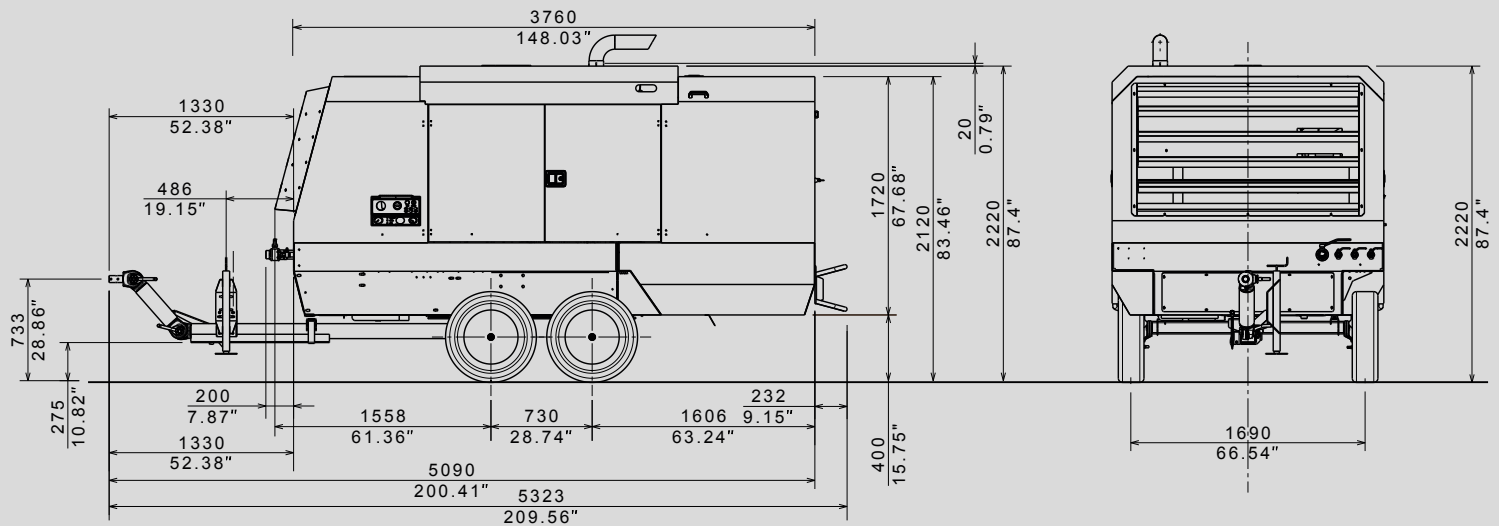
3250 KG
7165 LB

SKID VERSION



3050 KG
6724 LB

○



MDVS 255 C

PORTABLE COMPRESSORS

MAIN FEATURES

OPTIONS & ACCESSORIES

COMPRESSED AIR
FOR CIVIL ENGINEERING

GOMMAIR RANGE

DS RANGE

MDVN RANGE

MDVS RANGE

VRK RANGE

VRK FIBER RANGE

VRH RANGE

TVR RANGE

- › Design with modern, slender and aggressive line
- › Electro-galvanized bodywork and chassis with advanced painting procedure to grant an excellent preservation through time
- › Compact dimensions for easy handling and optimum dimensions / delivered power ratio
- › Light weight
- › Filters "spin-on" type for quick maintenance
- › Full accessibility for easy and rapid maintenance and service
- › Exclusive pneumatic control system, developed by ROTAIR, to adjust automatically engine revs, depending on the air to be delivered. This system is highly reliable and ensures fuel consumption saving.
- › Air/oil separator filter, highly oversized, can guarantee an excellent air/oil separation.
- › The air and oil filters of the compressor and the air and oil filters of the engine are independent.
- › Single stage oversized air filter for compressor part, to guarantee good filtering of the air intake by airend. As option, Two-stage air filter.
- › Two-stage air filter for engine part.
- › Combined radiator allowing both compressor oil cooling and engine liquid cooling.
- › Start/stop "INTELLIGENT SYSTEM", exclusive from ROTAIR, to prevent the risk of incorrect procedures during specific functioning.

BS sandblasting version INTEGRATED to the unit (cooler for compressed air cooling and condensate separator). The more the compressed air is cooled inside the final refrigeration kit of a compressor, the more its efficiency is prompted and the more water vapor condenses, thus allowing easy use of tools such as sandblasting kits.

Example, IN TYPICAL ENVIRONMENTAL CONDITIONS (Temperature = 20 °C / Relative humidity = 50% / Air outlet pressure = 7 bar) THE FOLLOWING VALUES ARE OBTAINED:

Difference with ambient temperature of delivered air	Water drawn in	Water drained	Water at outlet valves
+11 °C	1,8 lt/h	0,91 lt/h	50,56%
			0,89 lt/h
			49,44%

EXTERNAL DEHUMIDIFIER DEVICE "BS" WITH A HIGH DEGREE OF DEHUMIDIFICATION (combinable with portable compressors with flow rates from 2000 to 8000 lt/min).

This particular device ensures a quality of the delivered air with low outlet temperature; example: with an ambient temperature of 20 °C, temperature of delivered air is 0-2 °C higher than ambient temperature (for more information see the specific product sheet). The air, largely dehumidified, is an indispensable condition in the execution of particular processes such as: sandblasting - optical fibers installation - use of pneumatic tools sensitive to humidity. The external "BS" device is easy to connect to your portable compressor by means of a special kit of air pipes and is electrically powered by the portable compressor itself. Easily transportable and easy to handle thanks to its wheels, it is the unique and ideal device that satisfies the most severe and demanding operating conditions.

REEL FOR AIR PIPE

complete with 20 m of tubing diam. 19 x 30 with fittings to use any work tool at a distance without having to move the compressor.

FUEL LEVEL CHECK WITH WARNING LIGHT

important in order to protect the engine from sudden running out of fuel and subsequent choke, cleaning and filter replacement problems, etc

LINE LUBRICATOR FOR PNEUMATIC EQUIPMENT

Provides automatic lubrication to air-operated pneumatic tools to prevent rust and corrosion and steer the tools to have a smoother more effective operation, which prolongs the life of tools.

CONTROL WITH CLOGGING SENSOR FOR ENGINE AND COMPRESSOR AIR FILTERS

essential accessory in order to avoid bad air supply with the advantage of always having the maximum efficiency of the diesel engine and the supply of compressed air at the correct pressure.

EUROPEAN ROAD HOMOLOGATION in process of achievement with competent Authorities.

EXCLUSIVE ROTAIR "FUEL SAVING SYSTEM" for fuel savings of up to 20%.

ROTAIR DELIVERING WORLD-CLASS
COMPRESSORS

Via Bernezzo, 67 - 12023 Caraglio (Cn) - ITALY
Tel: +39 0171.619676 / Fax: +39 0171.619677
www.rotairspa.com | info@rotairspa.com



Azienda
certificata
ISO
9001:2015

ISO 9001
BUREAU VERITAS
Certification



ROTAIR - A brand of
ELGI Equipments Ltd.

Further information available on request. The manufacturer reserves the right to modify the technical characteristics indicated above without prior notice.