



HR90005

Diesel, Air and Water Spring Rewind Hose Reel

The EL Series HR90005 diesel, air and water spring rewind hose reel is a low pressure reel supplied standard with 30m rubber hose suitable for diesel transfer and air or water applications in commercial vehicle workshops, food processing, bottling plants, manufacturing facilities, pulp & paper manufacturing, minesite workshops, service vehicles and oil & gas industries. The hose reel drum is sturdy and practical with stiffening ribs and flanged edges for operator safety. The positive latching mechanism automatically locks the hose assembly at the desired length and the adjustable arms allow for floor, wall or ceiling mounting according to needs. The EL Series HR90005 diesel, air and water spring rewind hose reel from Alemlube will provide you with a reliable & cost effective means of storing and retrieving hose assemblies in your workshop.



PRODUCT SPECIFICATIONS, FEATURES AND BENEFITS

Reinforced steel frame provides maximum strength & stability

Working pressure of 300psi (20bar)

Includes 30m x 25mm ID rubber hose & hose stop

1.2mm lead in hose supplied standard (not depicted)

1.5mm thick robust drum assembly with stiffening ribs & flange edges

Reliable spring life tested to 20,000 cycles and positive ratchet lock design ensures a long working life

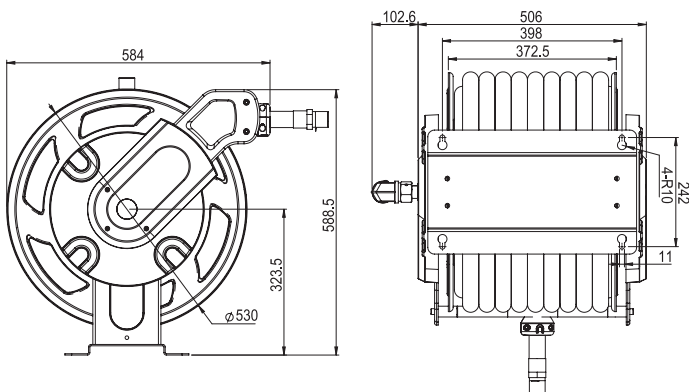
Can be mounted on the floor, wall or ceiling

Durable long lasting powder coated finish protects against the incidence of rust

Extends hose life and reduces hose replacement costs

Improves operator safety

Improves factory or workshop productivity



ORDERING INFORMATION

HR90005 Diesel, Air & Water Spring Rewind Hose Reel

